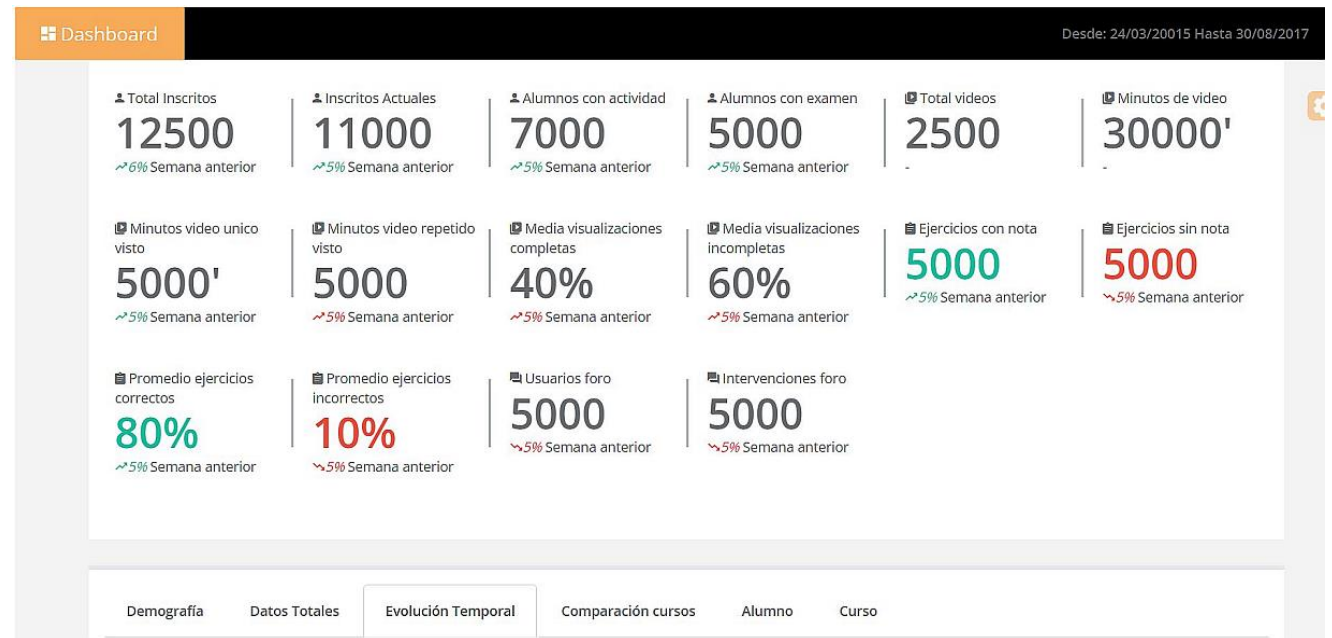


A low-angle, upward-looking photograph of a diverse group of graduates in black academic regalia. They are all smiling and looking upwards, creating a sense of joy and achievement. One graduate in the upper right is holding a rolled-up diploma tied with a red ribbon. The background consists of lush green trees under a bright sky. The text "Making Open edX an on campus LMS" is overlaid in the center in a white, sans-serif font.

Making Open edX an on campus LMS

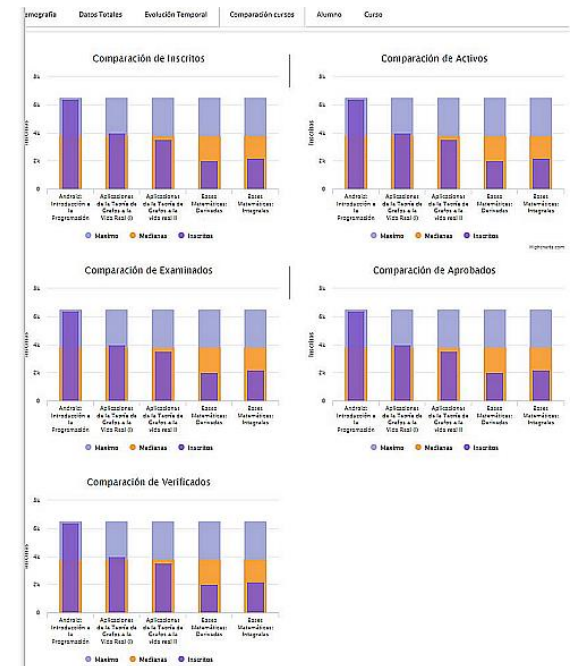
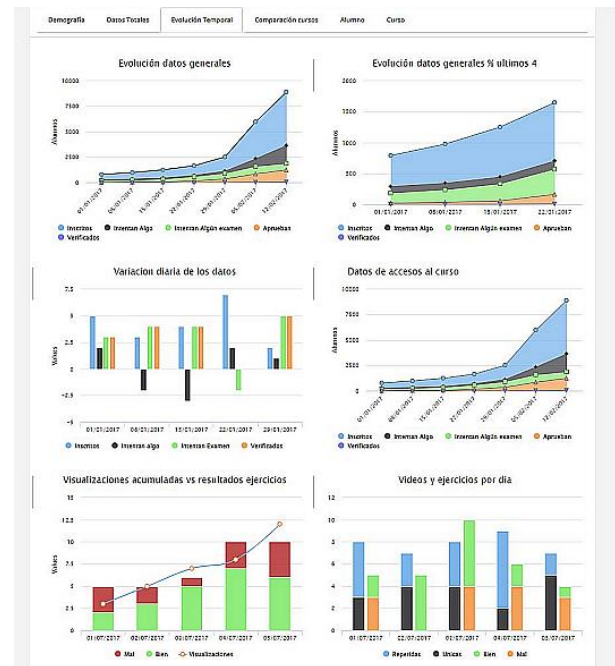
Aggregated statistics

- 3 sections: First section general aggregated data



Aggregated statistics


- 2 section: tabs with demographic, total, evolution and comparison data



Aggregated statistics

- Third section: List of courses with filters





Open edX groups



Sets of parallel groups (as Open edX Teams)



Teachers and students can be assigned to groups



Groups can have different access to content, forums and emails (as Open edX Cohorts)



Groups can be assigned to group ORA (as Open edX Teams)

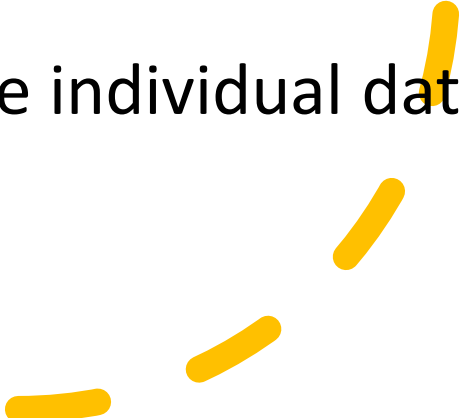


One teacher can access only information of the groups he or she has assigned



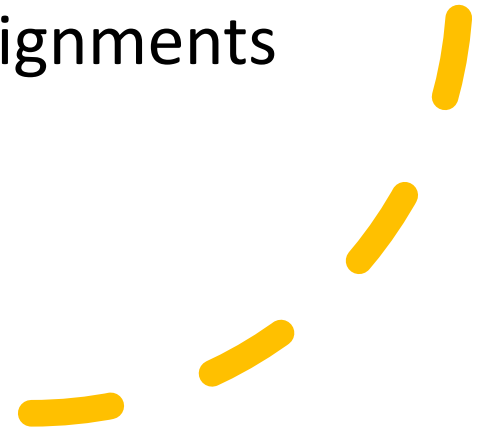
Groups can be imported automatically from academic systems

Ora improvements

- Anti-plagiarism tool integration
 - Possibility to use continuous grading in rubrics instead of levels
 - All cells in instructor panel clickable, all student names clickable
 - Possibility to give weights to peer and course team grades
 - The grade should be the average of the available grades
 - Integration of ORA activities in the individual date exception management
- 

Ora improvements

- Possibility to activate student resubmission in course team grading
- Possibility to add some ORA activities to a tab in the upper menu
- Student listing in instructor panel (and in ORA problem) with information of grading
- Notify students with pending assignments



Exam improvements

- Importing and exporting individual exams and problems libraries made with markup language
- Possibility to incorporate a problem library directly to a course
- Possibility to get one separate problem from a library and to send one problem to a library with several clicks
- Evaluable subsections should have an option to present each problem at a time without being able to go back and to select randomize order of presentation (for simultaneous exams)
- Add a late send date that is not seen by the students. Problems sent late should be marked

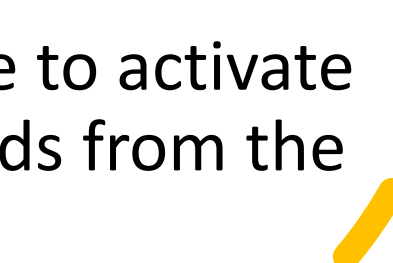
Exam improvements

- Possibility to add some exams to a tab in the upper menu
- IP address mask and/or password will be added for on class exams
- Better integration with SEB locked browser



A large orange circle on the left side of the slide, partially cut off by the edge.

More personalized communication

- Possibility to send emails to individual students and to list of students
 - Possibility to look for students by name or part of it
 - Adding an option to each forum thread so an email is generated each time someone contributes to it (or an email is generated at the end of each day with all the contributions to followed threads)
 - Forum administrators will be able to activate email sending for all forum threads from the instructor panel
- 
- A decorative graphic consisting of several short, thick yellow dashes arranged in a curved, upward-sloping path in the bottom right corner of the slide.

File management system from LMS

- Tool for the instructor to manage files and links with folders and sorting and filtering capacity as in Moodle or Sakai
- Tab in the upper menu for students with files selected by the instructor

The screenshot displays the 'poli (format)' LMS interface. At the top, there is a navigation bar with the university logo and user information. Below it, a menu bar contains various course and resource tabs, with 'Ingeniería Aeroportuaria' selected. The main content area shows a file management interface for 'Recursos del sitio'. A table lists files and folders, including 'DOCUMENTACION', 'ejercicios', 'EJERCICIOS', 'Grabaciones de las sesiones de clase /Class session recordings', and 'imagenes'. An 'Acciones' dropdown menu is open over the 'DOCUMENTACION' folder, showing options like 'Añadir', 'Subir fichero(s)', 'Nuevas URL (enlaces a un sitio web)', 'Nuevo documento de texto simple', 'Nueva página HTML', and 'Nueva lista de referencias'. The table columns include 'Acceso', 'Creado por', 'Modificado', and 'Tamaño'.

| | Acceso: | Creado por | Modificado | Tamaño |
|---|---------------------------------------|-------------------------|-------------------|---------------|
| <input type="checkbox"/> Ingeniería Aeroportuaria: Recursos | Todos los miembros del sitio | Joaquín Llop Gil | 21-jun-2013 11:55 | 22 elementos |
| <input type="checkbox"/> DOCUMENTACION | Todos los miembros del sitio (Oculto) | Ignacio Despujol Zabala | 30-mar-2014 23:40 | 599 elementos |
| <input type="checkbox"/> ejercicios | Todos los miembros del sitio | Ignacio Despujol Zabala | 05-feb-2018 16:15 | 26 elementos |
| <input type="checkbox"/> EJERCICIOS | Todos los miembros del sitio (Oculto) | Ignacio Despujol Zabala | 19-ene-2022 23:33 | 0 elementos |
| <input type="checkbox"/> Grabaciones de las sesiones de clase /Class session recordings | Todos los miembros del sitio (Oculto) | Ignacio Despujol Zabala | 20-jun-2013 23:50 | 36 elementos |
| <input type="checkbox"/> imagenes | | | | |

Limesurvey integration

- Mechanism to create users in Limesurvey surveys from Open edX using Anonymous user ID the first time the user clicks the survey
- Mechanism to embed the Limesurvey creation tool in the instructor tab of Open edX LMS with the possibility to create a user table in the Survey with the Anonymous user IDs of the course

Student's risk prediction

- Color coded listing of students in risk of abandoning made comparing the interaction and grades of a student with the ones of his/her group



Tools for multilingual courses

- Automatic creation of a set of groups by the language selected in the profile, with a default group for all not defined languages
- Content components for videos, problems, html, ORA that let course instructor define different versions depending on the language groups (as in Transifex)



Tool to create automated video dubbings

- Use of corrected transcripts (need to have punctuation symbols)
- Generation of new transcripts based on the punctuated sentences
- Creation of Text to Speech phrases with standard service (Google or Amazon)
- Concatenation of all phrases taking into account the times in the transcript files
- Mix with the original audio (volume reduced)
- Mix with the video
- GITHUB:
https://git.upv.es/serpucga/speech_generator